

XXXXXXXX XXXXXXXX
XXXXXXXXXX
XX XXXXXX XXXXXXX
XXXXXXXXXX
XXX XXX

Tel: XXXX XXX XXXX

Direct Dial: 01202 293867
E-mail rick@weathernet.co.uk
Web Site: www.weathernet.co.uk
Linkedin: www.linkedin.com/in/drrichardwild

22nd September 2017

Dear XXXXXXXX,

Incident

Location: Ratho (EH28 8RL)
Time: 1300
Date: 24th December 2017
Your Reference: XXXXXXXXXXXXX XX
My Reference: XXXX (XX)

Details of meteorological stations utilised

To establish what meteorological conditions occurred around the surrounding area of the time of the incident, I investigated where the closest meteorological station that was operating at the time. The closest meteorological station to the incident, at which hourly meteorological data was available to me, was Edinburgh, Gogarbank (1.6 miles to the east). The closest meteorological stations to the incident, at which daily weather data was available to me, were Edinburgh, Gogarbank (2.6km) and Edinburgh, Royal Botanic Garden No.2 (11.8km). This daily meteorological data (from ground and automatic weather stations) should prove to be representative of the incident (see attached sheets in the appendices).

Meteorological reports/documents enclosed

Hourly meteorological report from Edinburgh, Gogarbank.
Daily meteorological report from Edinburgh, Gogarbank and Edinburgh, Royal Botanic Garden No.2.

Anecdotal reports enclosed

No anecdotal reports were included.

I very much hope that the information is acceptable and please do not hesitate to call if I can be of further assistance in this or in any other case in the future.



Please note that this is a Non CPR Legal Weather Report, and this report cannot be used as evidence in a court of law as this incident has not be fully researched and only shows a snap shot of the raw daily or hourly data in the surrounding area of the incident from the nearest meteorological stations. No interpretation, conclusion and statement of truth etc. have been included. If at a later date you require a CPR Legal Weather Report (for potential court purposes) for this case which will include if required rainfall radar and modelled weather data in the research for the incident postcode itself, please contact me at the above address.

Kind regards

Yours sincerely

Dr Richard J. Wild BSc (Hons) PhD FRMetS FRCGS FRCR FRCRCS E MCS
Weather Services Commercial Manager/Senior Forensic Meteorologist, WeatherNet Limited

Enc.:

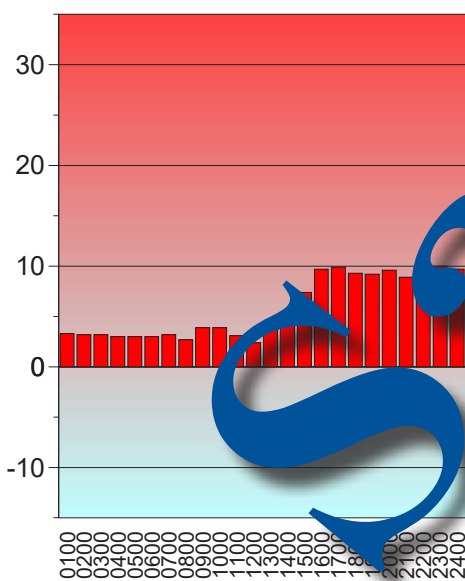
Sample



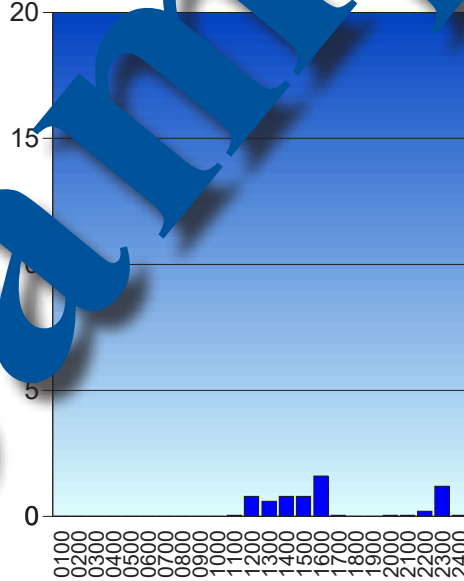
**Weather at Edinburgh, Gogarbank (57m ASL) 1.6 miles E of EH28 8RL (90m ASL)
Monday 23 December 2013**

GMT	Air Temp	Humidity	Rain	Visibility	Sun	Cloud Cover	Wind From	Mean Wind	Max Gust	Weather
0100	3.3°C	75%	0.0mm	40km	0hr		210°	19kt	29kt	None
0200	3.2°C	76.7%	0.0mm	40km	0hr	25%	220°	19kt	30kt	None
0300	3.2°C	75.5%	0.0mm	45km	0hr	37.5%	220°	17kt	31kt	None
0400	3.0°C	77.2%	0.0mm	40km	0hr	12.5%	220°	16kt	29kt	None
0500	3.0°C	77.2%	0.0mm	35km	0hr	25%	220°	13kt	29kt	None
0600	3.0°C	77.2%	0.0mm	35km	0hr		220°	8kt	15kt	None
0700	3.2°C	76.7%	0.0mm	35km	0hr		210°	11kt	20kt	None
0800	2.7°C	80%	0.0mm	30km	0hr		120°	3kt	6kt	None
0900	3.9°C	79.6%	0.0mm	30km	0hr	25%	130°	4kt	9kt	None
1000	3.9°C	81.9%	0.0mm	30km	0hr	87.5%	120°	11kt	21kt	None
1100	3.1°C	88.6%	0.05mm	10km	0hr	62.5%	100°	11kt	21kt	Moderate rain showers
1200	2.4°C	91.1%	0.8mm	18km	0hr	62.5%	080°	8kt	14kt	Slight rain
1300	3.9°C	85.5%	0.6mm	10km	0hr	75%	080°	6kt	20kt	Moderate rain
1400	4.9°C	85%	0.8mm	25km	0hr	87.5%	160°	12kt	20kt	Slight rain
1500	7.4°C	87.7%	0.8mm	12km	0hr	87.5%	190°	11kt	24kt	Moderate rain
1600	9.7°C	86.2%	1.6mm	30km	0hr	87.5%	210°	15kt	25kt	Rain
1700	9.9°C	77.8%	0.05mm	30km	0hr	87.5%	210°	18kt	25kt	Rain
1800	9.3°C	75.5%	0.0mm	30km	0hr	12.5%	230°	14kt	25kt	None
1900	9.2°C	74%	0.0mm	25km	0hr	50%	220°	11kt	29kt	None
2000	9.6°C	74.5%	0.05mm	20km	0hr	75%	210°	11kt	31kt	Rain
2100	8.9°C	78.7%	0.05mm	19km	0hr	37.5%	210°	15kt	25kt	Slight rain showers
2200	9.7°C	83.3%	0.2mm	8km	0hr	87.5%	190°	16kt	29kt	Moderate rain
2300	10.0°C	77.8%	1.2mm	50km	0hr	87.5%	190°	17kt	32kt	Rain
2400	9.7°C	81.6%	0.05mm	30km	0hr	62.5%	190°	17kt	33kt	Slight rain showers
Totals			6.25mm		0.0hr					

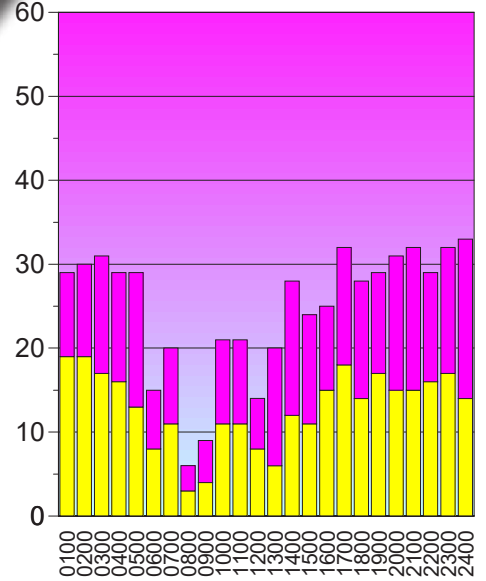
Air Temperature (°C)



Rainfall (mm)



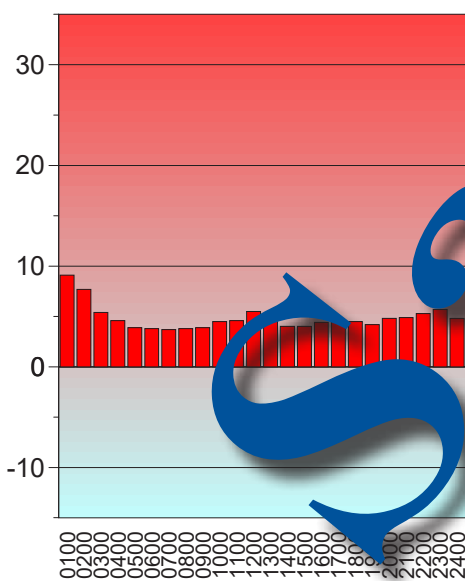
Mean Wind & Gust (kt)



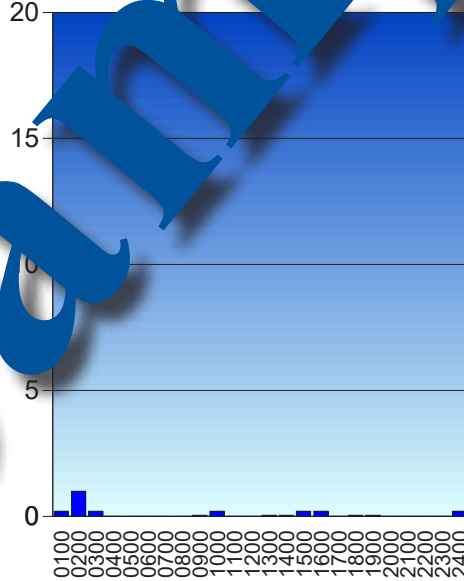
**Weather at Edinburgh, Gogarbank (57m ASL) 1.6 miles E of EH28 8RL (90m ASL)
Tuesday 24 December 2013**

GMT	Air Temp	Humidity	Rain	Visibility	Sun	Cloud Cover	Wind From	Mean Wind	Max Gust	Weather
0100	9.1°C	84.9%	0.2mm	14km	0hr	87.5%	180°	11kt	24kt	Moderate rain
0200	7.7°C	80.7%	1.0mm	12km	0hr	62.5%	220°	23kt	39kt	Heavy rain
0300	5.4°C	77.6%	0.2mm	35km	0hr	62.5%	230°	18kt	43kt	Rain
0400	4.6°C	70.5%	0.0mm	30km	0hr		230°	18kt	37kt	None
0500	3.9°C	68.3%	0.0mm	40km	0hr		220°	21kt	36kt	None
0600	3.8°C	70.3%	0.0mm	35km	0hr	50%	220°	19kt	35kt	None
0700	3.7°C	69.3%	0.0mm	30km	0hr	25%	200°	16kt	31kt	None
0800	3.8°C	65.8%	0.0mm	26km	0hr		210°	19kt	38kt	None
0900	3.9°C	71.4%	0.05mm	13km	0hr	25%	200°	20kt	36kt	Moderate rain showers
1000	4.5°C	61.7%	0.2mm	30km	0hr	87.5%	210°	24kt	42kt	Rain
1100	4.6°C	61.8%	0.0mm	21km	0hr		200°	20kt	40kt	None
1200	5.5°C	55.5%	0.0mm	20km	0.7hr	12.5%	200°	22kt	42kt	None
1300	5.3°C	58.8%	0.05mm	25km	0.4hr	37.5%	210°	26kt	45kt	Rain
1400	4.0°C	78.5%	0.05mm	20km	0hr	75%	210°	27kt	46kt	Slight rain showers
1500	4.0°C	80.2%	0.2mm	24km	0hr	37.5%	210°	26kt	45kt	Slight rain
1600	4.4°C	78.5%	0.2mm	35km	0hr	12.5%	200°	25kt	43kt	Rain
1700	4.4°C	75.8%	0.0mm	40km	0hr	62.5%	210°	19kt	35kt	None
1800	4.5°C	74.7%	0.05mm	30km	0hr	12.5%	220°	19kt	35kt	Slight rain showers
1900	4.2°C	76.8%	0.05mm	35km	0hr	37.5%	210°	25kt	40kt	Rain
2000	4.8°C	70%	0.0mm	30km	0hr		210°	25kt	39kt	None
2100	4.9°C	68.5%	0.0mm	30km	0hr		200°	22kt	35kt	None
2200	5.3°C	66.2%	0.0mm	28km	0hr		210°	24kt	42kt	None
2300	5.7°C	65.3%	0.0mm	27km	0hr	50%	210°	26kt	45kt	None
2400	4.8°C	78%	0.2mm	9km	0hr	75%	220°	26kt	48kt	Moderate rain showers
Totals			2.45mm		1.1hr					

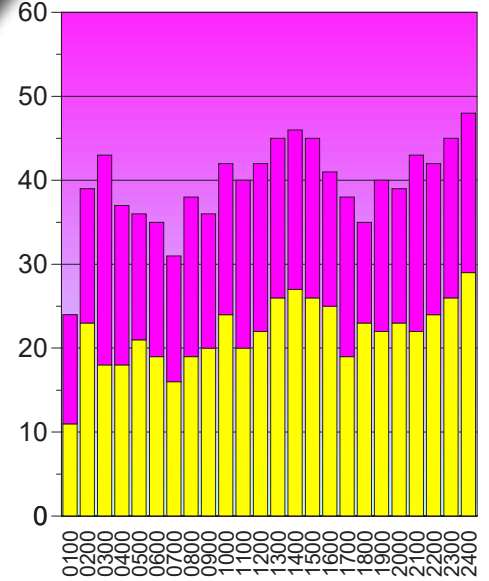
Air Temperature (°C)



Rain (mm)



Mean Wind & Gust (kt)



Weather for 30km around EH28 8RL
23/12/2013 - 25/12/2013

Mon 23 Dec 2013	Grass	Min T	Max T	Rain	Sun	Wind	Mx Gust	from	Significant Weather
Edinburgh, Gogarbank @2.6km	-0.5°C	1.4°C	10.3°C	6.3mm	0.0hr	22mph	38mph	190°	None
Edinburgh, Royal Botanic Garden No. 2 @11.8km	-1.5°C	1.9°C	10.5°C	4.4mm					N/A

Tue 24 Dec 2013	Grass	Min T	Max T	Rain	Sun	Wind	Mx Gust	from	Significant Weather
Edinburgh, Gogarbank @2.6km	1.9°C	2.3°C	6.0°C	2.5mm	1.1hr	33mph	55mph	220°	None
Edinburgh, Royal Botanic Garden No. 2 @11.8km	0.6°C	2.9°C	6.5°C	0.8mm					N/A

Wed 25 Dec 2013	Grass	Min T	Max T	Rain	Sun	Wind	Mx Gust	from	Significant Weather
Edinburgh, Gogarbank @2.6km	2.6°C	3.4°C	7.4°C	2.1mm	1.9hr	30mph	50mph	230°	None
Edinburgh, Royal Botanic Garden No. 2 @11.8km	1.7°C	3.9°C	7.7°C	0.8mm					N/A

Sample

Beaufort Scale

1 mph = 0.868 Knots

Beaufort Force	Description	Mean Speed (mph)	Lower Limit (mph)	Upper Limit (mph)	Specification on Land	As Used at Sea	
						State of Sea	Specification at Sea
0	Calm	0	0	1	Sea like a mirror	Calm	Sea like a mirror
1	Light Air	2	1	3	Direction of wind shown by smoke drift but not by wind vanes	Calm	Ripples with the appearance of scales are formed, without foam crests
2	Light Breeze	5	4	7	Leaves and light flags begin to rustle	Smooth	Small wavelets, still short but more pronounced; crests have a glassy appearance and do not break
3	Gentle Breeze	10	8	12	Leaves and light flags in constant motion; wind felt on the face	Smooth	Large wavelets; crests begin to break; foam is of glassy appearance; scattered white horses
4	Moderate Breeze	15	13	18	Dust & loose papers raised; branches move continually	Slight	Small waves; becoming longer; fairly frequent white horses
5	Fresh Breeze	21	18	24	Small trees in leaf begin to sway; waves marked by white foam crests	Moderate	Moderate waves with more pronounced long form; many white horses; chance of some spray
6	Strong Breeze	27	24	31	Large branches in motion; whistling heard in telegraph wires	Rough	Large waves begin to form; white foam crests are more extensive everywhere; probably some spray
7	Near Gale	35	31	38	Whole trees in motion; inconvenience felt when walking against the wind	Very Rough	Sea heaps up and white foam from breaking waves begins to be blown along the direction of the wind
8	Gale	42	39	46	Twigs break off trees; difficult to walk against wind	High	Moderately high waves of greater length; edges of crests begin to blow into spray
9	Strong Gale	50	47	54	Slight structural damage to chimney pots, aeriels & roof slates	Very High	High waves of long wavelength with foam blowing along the direction of the wind; crests of waves begin to topple, tumble and roll over; spray may affect visibility
10	Storm	59	55	63	Trees uprooted; considerable structural damage	Very High	Very high waves of long wavelength and greater length; foam patches blown along the direction of the wind
11	Violent Storm	68	64	72	Widespread structural damage	Phenomenal	Exceptionally high waves of long wavelength and greater length; sea "churning" or "churning" of sea; visibility affected everywhere; spray from crests of waves is blown into froth
12	Hurricane	-	73	-	Devastation	Phenomenal	Air is filled with foam and spray; sea completely white with driving spray; visibility very seriously affected